

SETTING THE CRANK:

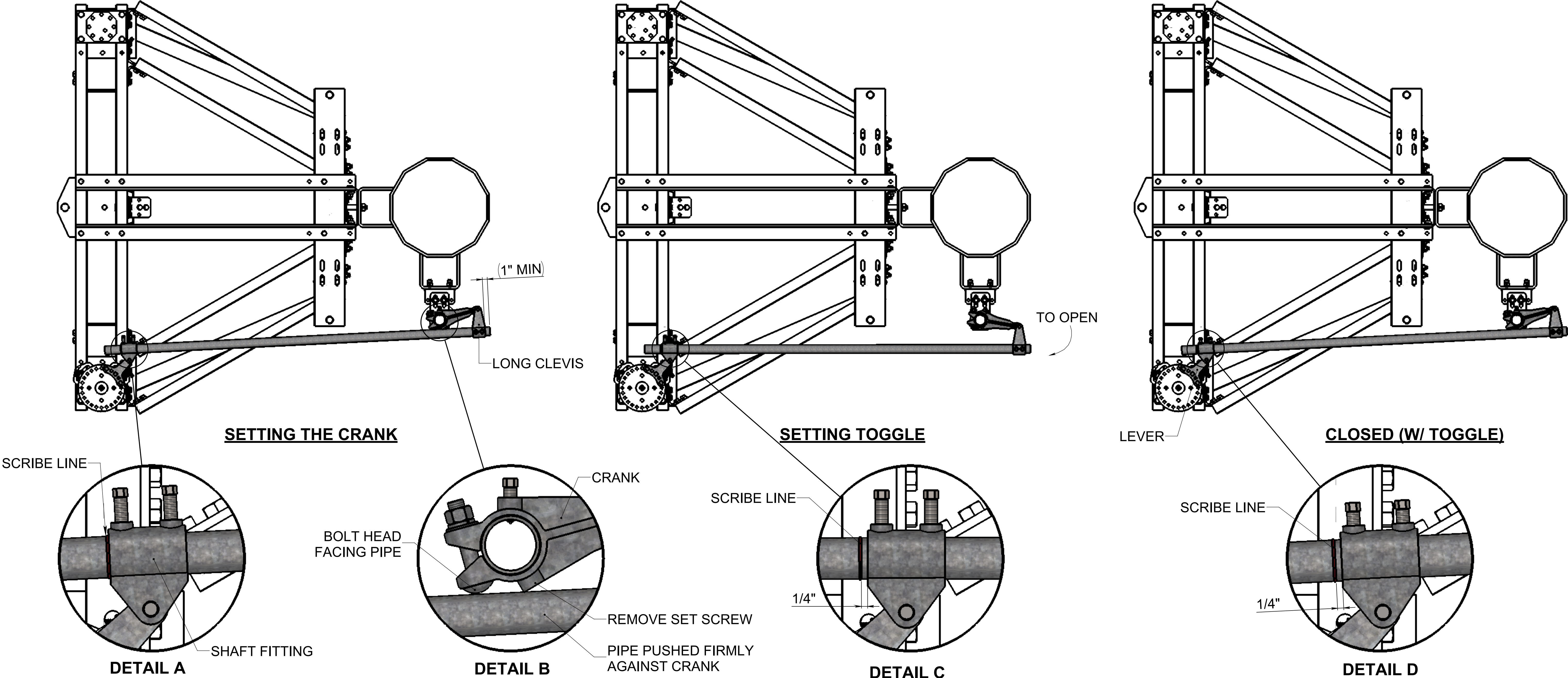
- 1. WITH THE SWITCH IN THE FULLY CLOSED POSITION INSTALL COMPONENTS LOOSELY AS SHOWN BELOW. POSITION CRANK SO PIPE IS LEVEL.
- 2. REMOVE SET SCREW ON PIPE SIDE OF CRANK AND INSTALL CARRIAGE BOLT AS SHOWN IN DETAIL B.
- 3. FIRMLY PUSH PIPE AGAINST THE CRANK, TIGHTEN THE CARRIAGE BOLT AND PIERCING SCREWS ON THE CRANK AND LONG CLEVIS. DO NOT PIERCE SET SCREWS UNTIL ADJUSTMENT IS FINALIZED.
- 4. SCRIBE A LINE ON THE PIPE AGIANST THE SHAFT FITTING AS SHOWN IN DETAIL A.

SETTING TOGGLE:

- 1. WITH THE PIERCING SCREWS ON THE SHAFT FITTING LOOSE, HAVE THE OPERATOR SLOWLY OPEN THE SWITCH UNTIL THE SCRIBED LINE HAS MOVED 1/4". TIGHTEN SET SCREWS.
- 2. OPERATE THE SWITCH MULTIPLE TIMES AND CONFIRM PROPER OPERATION OF THE SWITCH.
- 3. IF SWITCH OPERATES CORRECTLY, PIERCE ALL SET SCREWS.
- 4. IF DELTA PHASE IS NOT CLOSING FULLY, REPEAT STEPS ABOVE ADDING AN ADDITIONAL 1/8" OF TOGGLE UNTIL PROPER SWITCH OPERATION.

NOTES:

- 1. IT IS NORMAL FOR THE DELTA PHASE TO OPEN SLIGHTLY LESS THAN THE OTHER PHASES. IF BLADES ARE OFF BY MORE THAN A FEW DEGREES, THE BASE BEARING STOPS CAN BE ADJUSTED TO IMPROVE ALIGNMENT (SEE SINGLE PHASE DRAWING).
- 2. REFER TO SWITCH SPECIFIC CONTROL DRAWING FOR ANY ADDITIONAL ADJUSTMENT INFORMATION.
- 3. WHEN APPLICABLE, THE LEVER CAN BE MOVED AS NEEDED TO ALLOW FOR PROPER OPERATION.



DOCUMENT : II-002-DELTA

REVISIONS					
REV.	DESCRIPTION	DATE	APPROVED		
A	UPDATED VIEWS AND NOTES TO CURRENT STANDARDS	7/27/2022	JDR		
UNLESS OTHERWISE SPECIFIED:		NAME	DATE	<div>SEECO Southern Electrical Equipment Co. 4045 Hargrove Ave. Charlotte, NC 28208</div> <div>TITLE: INSTRUCTIONS, PHASE-OVER-PHASE GOABS, DELTA PHASE</div>	
DIMENSIONS ARE IN INCHES TOLERANCES: FRACTIONAL ± .05 ANGULAR: MACHINE ± .5 BEND ± 1 TWO PLACE DECIMAL ± .05 THREE PLACE DECIMAL ± .005		DRAWN	GBS		6/16/2006
		CHECKED	JGR		6/16/2006
		ENG APPR.	JGR		6/16/2006
		MFG APPR.			
INTERPRET GEOMETRIC TOLERANCING PER:		Q.A.			
MATERIAL:		COMMENTS:			
		--			
Stock Number		FINISH			
Vendor Group	N/A				
Mfg. Part No.					
SCALE: 1:20 WEIGHT: N/A SHEET 1 OF 1					