



Order Specifications for Type SUB Motor Operators

Document OS-001-2
Revised October 27, 2023

Please contact our Application Engineering personnel at (704)-893-0222 if you require assistance in completing the Order Specification or if you have requirements other than what is shown. If we must contact you to confirm your information, please provide a contact name and number. If more than one Motor type is required, please fill out a separate Order Specification sheet for each motor type.

Organization _____ Contact (Name) _____

Phone # _____ E-Mail Address _____

These motors are typically used for Substation applications. For more specific Transmission applications, refer to MNM Motor Operator Spec Sheet ([OS-001-1](#)).

For solar motor applications, refer to MNM Solar Operator Spec Sheet ([OS-001-5](#)).

Order Spec sheets available at www.seecoswitch.com.

1. Motor Operator

1.1. Torque:

Torque (inch/lbs)	15,000	20,000*	30,000*
Operating Speed (sec)	3-5	6-8	9-13

☐ ☐ ☐

1.2. Customer Supplied DC Voltage:

☐ 24VDC ☐ 48VDC ☐ 125VDC

2. Group Operated Switch

2.1. Manufacturer: _____

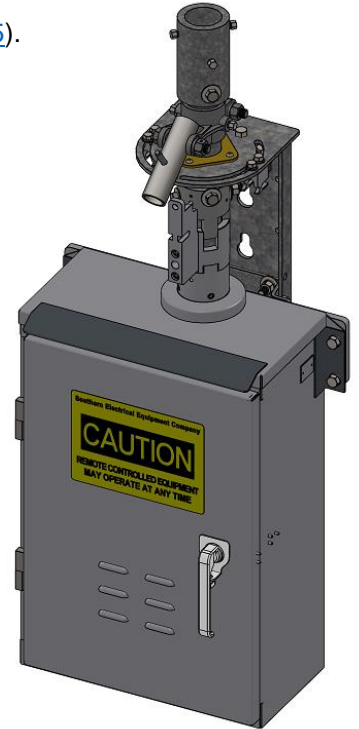
Catalog Number: _____

kV Rating: _____

2.2. Switch Type:

☐ Vertical Break ☐ Center Break ☐ Side Break
☐ Center Vee ☐ Double End Break ☐ Other: _____

2.3. Interrupting Device & Brand: _____





Order Specifications for Type SUB Motor Operators

Document OS-001-2
Revised October 27, 2023

3. Structure Mounting

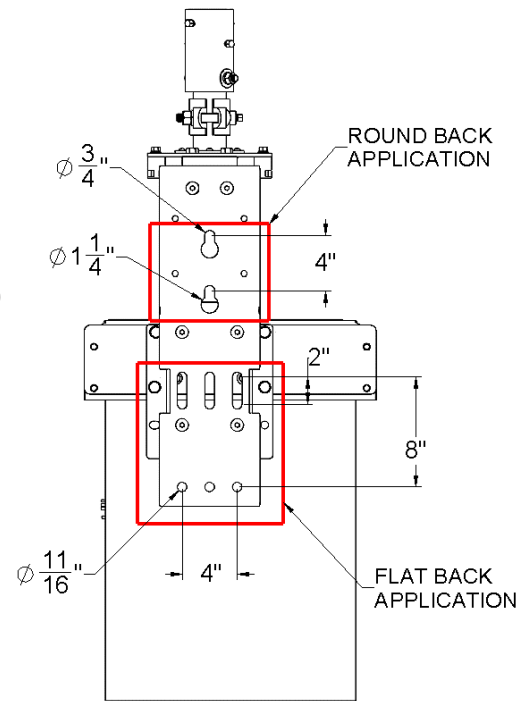
3.1. Structure Mounting:

- ☐ Flat Back
☐ Round Back
☐ Other: _____ (Provide Drawings)

3.2. Offset dimension from face of structure to centerline of vertical control pipe _____ inches (6 1/4" Default)

3.3. Size of switch control pipe (IPS):

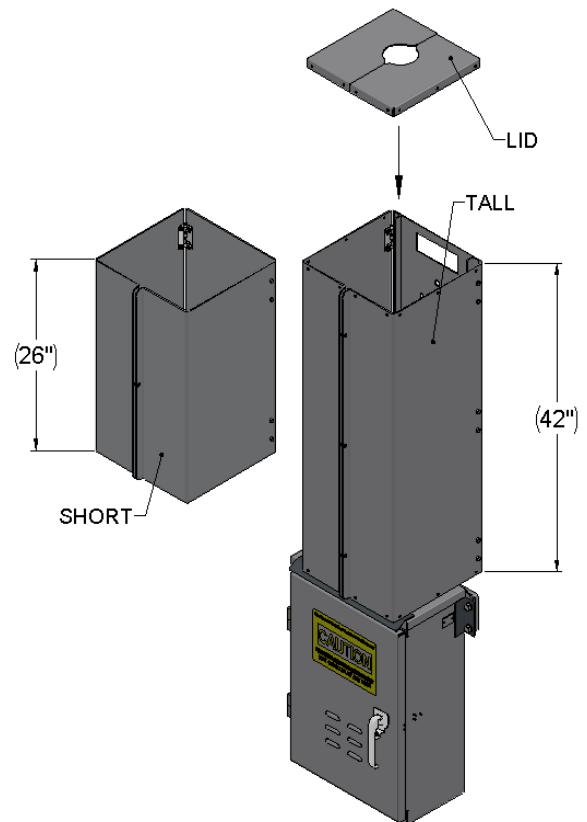
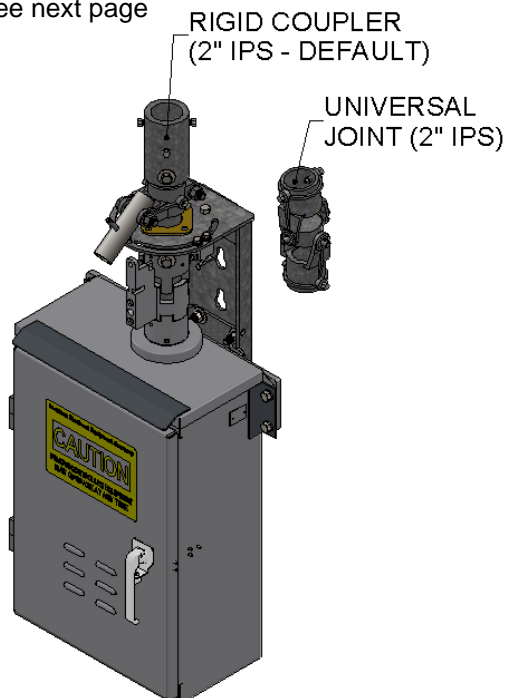
- ☐ 1 1/2" IPS ☐ 2" IPS (Default)
☐ 2 1/2" IPS ☐ Other: _____



4. Optional Features

4.1. Below is the list of available options labeled alphabetically.

- G. ☐ Switch Position/Coupled or De-Coupled Position
J. ☐ Protective Shroud (See image)
 ☐ Short ☐ Tall ☐ Lid
L. ☐ Reciprocating Adapter (Push-Pull operator)
P. ☐ Manual Hand Crank
Q. ☐ Universal Operating Counter
S. ☐ Universal Joint (2" IPS)
Z. See next page





Order Specifications for Type SUB Motor Operators

Document OS-001-2
Revised October 27, 2023

Z. ☐ Miscellaneous Options (Provide Specs)

Common Requests:

☐ Time Delay: _____ sec.

Local/Remote Switch

☐ Latch (Default) ☐ Momentary ☐ Delete

☐ Sealed Vents for very fine dust

☐ Interlock

☐ Etc., (Specify below)

Note:

- Option "G" indicates true switch position status. (for open, close, and coupling indication).