



**Serving the Electrical Utility
Industry Since 1920**

Center-Vee Switch



**SEECO 69 kV, 1200 amp center Vee switch,
catalog CH06912S-V**

Ordering Information

Standard Equipment

Type "C" center vee switches come complete with copper and copper alloy live parts, galvanized steel channel bases, and a manual control mechanism consisting of vertical control rods, horizontal control rods, outboard bearings, intermediate control rod guides, operating handle, lock-plate assembly, and ground strap.

Switches up through 230 kV are shipped complete with standard strength station post insulators: individual switch pole units are preassembled and factory adjusted.

Type "C" center vee switches for horizontal upright mounting are supplied with wipe-type arcing horns of hard drawn copper. Wipe-type horns protect the main switch contacts in opening and closing but are not rated for interruption of line charging or transformer magnetizing currents.

For more demanding interrupting requirements, high-speed, snap-out arcing horns can be provided for interruption of charging and magnetizing currents. Loop split applications can be handled through the addition of a SEECO MONORUPTR(R) single bottle vacuum interrupter.

Optional Equipment

Accessories, such as motor operators, worm gear mechanisms, mounting trusses, single bottle loop split interrupters, operator platforms, terminal connectors, and auxiliary switches are also available.

Type: C

Insulator Profile: Vee Configuration

Orientation: Horizontal Upright, Vertical, Underhung

Voltage: 34.5 - 230 KV

Current: 600, 1200, and 2000 Ampere

Description

A two insulator, group operated, side-opening, air-break disconnect switch in a vee configuration, with two rotating insulators per phase for operation.

Application

Frequently used for line disconnecting, isolating and bypassing breakers and transformers, bus sectionalizing, and isolating arrestors, metering equipment, and other apparatus.

Features & Benefits

- Small footprint minimizes mounting structure size, cost
- Simple and mechanically reliable
- No overhead clearance problems
- Easiest operating of all group operated switches
- Excellent ice breaking characteristics
- Lower cost vs. three insulator style switches
- Readily adaptable to quick break arcing horns and single bottle loop split vacuum interrupters

To Be Specified on Order

To obtain pricing information or to place an order, the following minimum information must be specified:

- Catalog Number
- Voltage Rating (kV) and BIL Rating (kV)
- Continuous Current Rating (amps)
- Momentary Current Rating (RMS amps)
- If insulators are required, specify TR Number; if insulators are non-standard, specify required parameters, i.e. polymer, extra leakage distance, high strength, resistive glazing, etc.
- For structure mounted switches, type of mounting structure (beam, tube, lattice) with mounting details and dimensions, i.e. switch mounting height above grade, phase spacing, etc.
- For pole mounted switches, type of pole (wood, concrete, steel, laminated wood) with mounting details and dimensions, i.e. switch mounting height above grade, phase spacing, cross-arm or truss details, etc.
- Type of operating mechanism: manual, motor operator, or worm gear
- Optional equipment

An Order Specification checklist is available to assist you in organizing and completing the information required. You may obtain a copy of the checklist by contacting SEECO, your local sales representative, or on-line at www.seecoswitch.com



**Serving the Electrical Utility
Industry Since 1920**

Catalog Numbers and Ratings

Voltage Rating			Current Rating		Insul TR Nbr	Type "C" Center Vee Switch				
Nom	Max	BIL	Cont	Mom		Horizontal	Vertical	Underhung	Weight, Lbs	
									Install	Ship
34.5	38	200	600	40	210	CH03406S-V	CV03406S-V	CU03406S-V	600	871
			1200	61		CH03412S-V	CV03412S-V	CU03412S-V	615	892
			2000	100		CH03420S-V	CV03420S-V	CU03420S-V	625	907
46	48.3	250	600	40	214	CH04606S-V	CV04606S-V	CU04606S-V	699	1015
			1200	61		CH04612S-V	CV04612S-V	CU04612S-V	714	1030
			2000	100		CH04620S-V	CV04620S-V	CU04620S-V	724	1045
69	72.5	350	600	40	216	CH06906S-V	CV06906S-V	CU06906S-V	948	1460
			1200	61		CH06912S-V	CV06912S-V	CU06912S-V	957	1470
			2000	100		CH06920S-V	CV06920S-V	CU06920S-V	967	1485
115	121	550	600	40	286	CH11506S-V	CV11506S-V	CU11506S-V	2043	2680
			1200	61		CH11512S-V	CV11512S-V	CU11512S-V	2073	2710
			2000	100		CH11520S-V	CV11520S-V	CU11520S-V	2093	2736
138	145	650	600	40	288	CH13806S-V	CV13806S-V	CU13806S-V	2217	2825
			1200	61		CH13812S-V	CV13812S-V	CU13812S-V	2253	2860
			2000	100		CH13820S-V	CV13820S-V	CU13820S-V	2283	2898
161	169	750 (1)	600	40	291	CH16106S-V	CV16106S-V	CU16106S-V	2868	3475
			1200	61		CH16112S-V	CV16112S-V	CU16112S-V	2919	3525
			2000	100		CH16120S-V	CV16120S-V	CU16120S-V	2979	3597
230	245	900 (2)	600	40	304	CH23006S-V	CV23006S-V	CU23006S-V	3568	4205
			1200	61		CH23012S-V	CV23012S-V	CU23012S-V	3648	4300
			2000	100		CH23020S-V	CV23020S-V	CU23020S-V	3688	4347

NEMA Recommended Phase Spacing (inches)				
kV	Buses	Without Horns	Horn Gap	Min. Metal to Metal
34.5	36	48	60	18
46	48	60	72	22
69	60	72	84	32
115	84	108	120	53
138	96	132	144	63
161	108	156	168	72
230	132	192	192	89

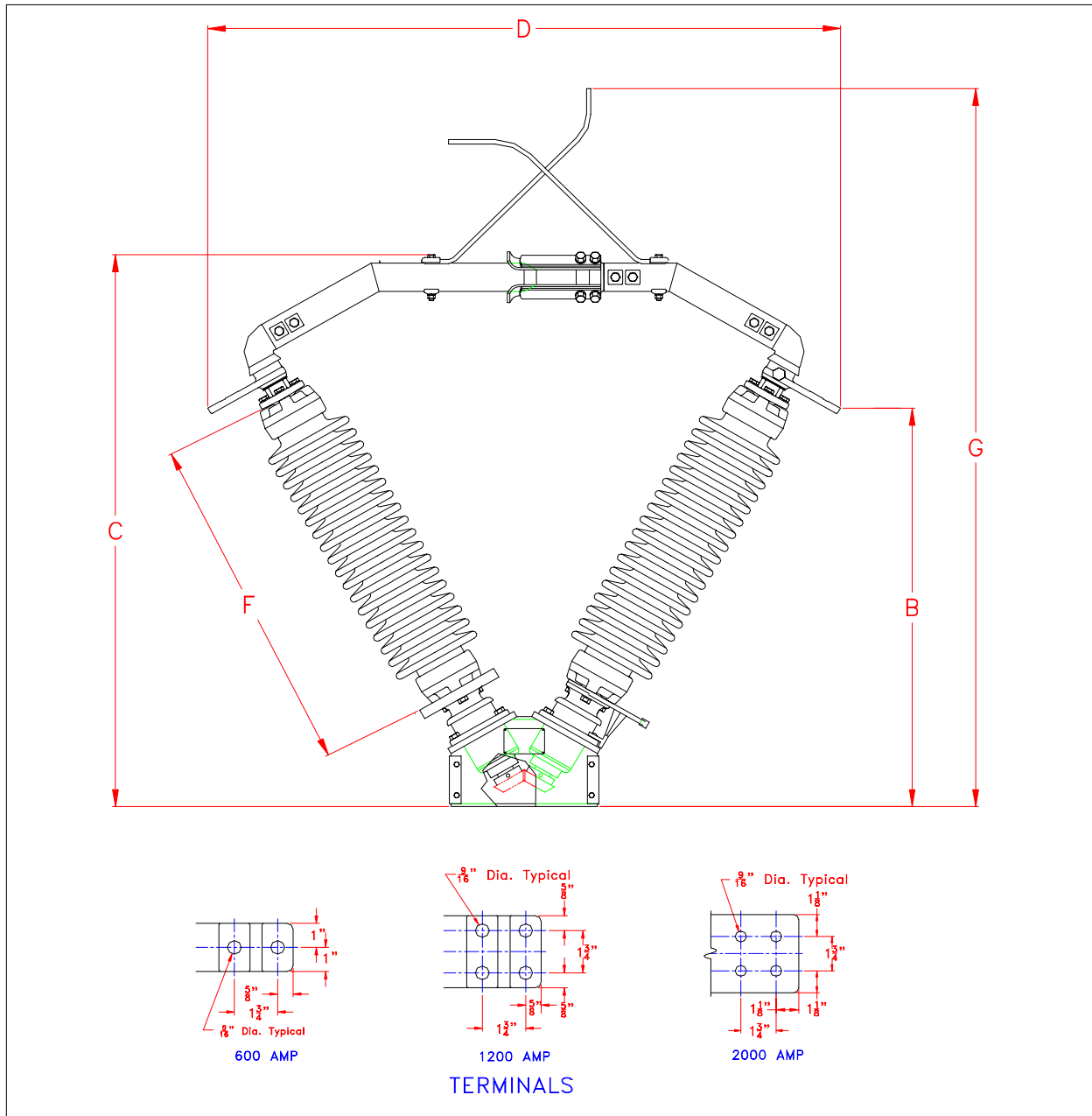
(1) To specify a 161 kV switch with a 900 BIL, add "-0900" to the catalog number, ex. CH16112S-V-0900

(2) To specify a 230 kV switch with a 1050 BIL, add "-1050" to the catalog number, ex. CH23012S-V-1050



**Serving the Electrical Utility
Industry Since 1920**

Dimensional Data 34.5 - 69 kV, Type C



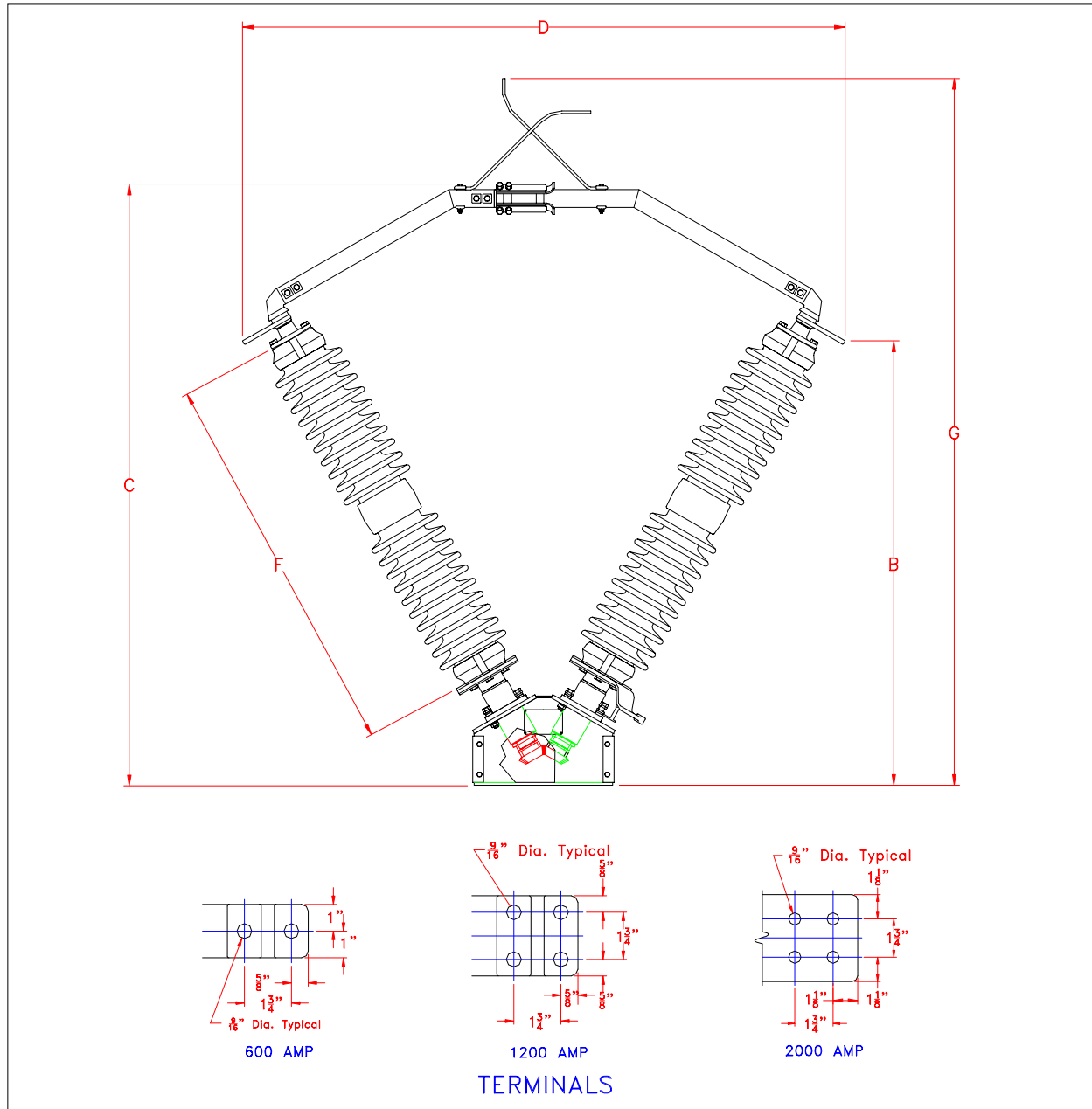
Dimensions in Inches (Unless Otherwise Specified)

kV	B	C	D	F	G
34.5	24-1/2	35-1/8	42-5/8	18	49-7/8
46	28	39-3/4	46-5/8	22	54-1/2
69	35	49	54-1/2	30	63-3/4



**Serving the Electrical Utility
Industry Since 1920**

Dimensional Data 115 - 230 kV, Type C



Dimensions in Inches (Unless Otherwise Specified)

kV	B	C	D	F	G
115	54	73-13/16	74-3/4	45	88-9/16
138	62	84-3/16	83-3/4	54	99
161	68-3/4	93-7/16	91-3/4	62	109-3/16

Note: For 230 kV dimensional data, consult the factory