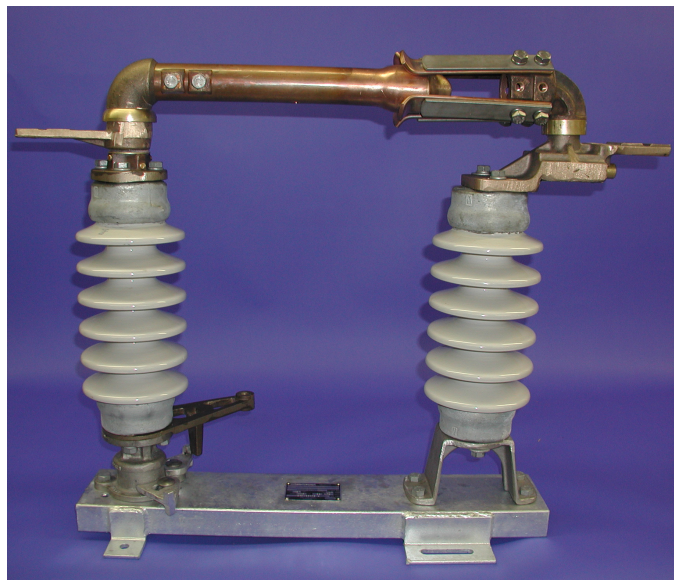




Side-Break Switch



**SEECO 23 kV, 600 amp side-break switch,
catalog SV02306S**

Type: S

Insulator Profile: Parallel

Orientation: Horizontal Upright, Vertical, Underhung

Voltage: 15 - 161 kV

Current: 600, 1200, and 2000 Ampere

Description

A two insulator, group operated, side-opening, air-break disconnect switch, with one rotating insulator per phase for operation.

Application

Frequently used for line disconnecting, isolating and by-passing breakers and transformers, bus sectionalizing, and isolating arrestors, metering equipment, and other apparatus. Can be either pole or substation structure mounted.

Features & Benefits

- Simple and mechanically reliable
- No overhead clearance problems
- Minimal operating effort, especially at higher voltages
- Lowest cost vs. other types of group operated switches
- Readily adaptable to quick break arcing horns
- Excellent ice breaking characteristics

Ordering Information

Standard Equipment

Type "S" side-break switches come complete with copper and copper alloy live parts, galvanized steel channel bases, and a manual control mechanism consisting of vertical control rods, horizontal control rods, outboard bearings, intermediate control rod guides, operating handle, lock-plate assembly, and ground strap.

Switches up through 69kV are shipped complete with standard strength station post insulators; individual switch pole units are pre-assembled and factory adjusted. Switches rated 115 kV and above are shipped pre-assembled (live parts on switch bases), but with insulators crated separately for more economical transportation.

Type "S" switches for horizontal upright mounting are supplied with wipe-type arcing horns of hard drawn copper. Wipe-type horns protect the main switch contacts in opening and closing but are not rated for interruption of line charging or transformer magnetizing currents. For more demanding interrupting requirements, high speed, snap-out arcing horns can be provided, at additional cost.

Optional Equipment

Accessories, such as motor operators, worm gear mechanisms, mounting trusses, quick break arcing horns, operator platforms, terminal connectors, and auxiliary switches are also available.

To Be Specified on Order

To obtain pricing information or to place an order, the following minimum information must be specified:

- Catalog Number
- Voltage Rating (kV) and BIL Rating (kV)
- Continuous Current Rating (amps)
- Momentary Current Rating (RMS amps)
- If insulators are required, specify TR Number; if insulators are non-standard, specify required parameters, i.e. polymer, extra leakage distance, high strength, resistive glazing, etc.
- For structure mounted switches, type of mounting structure (beam, tube, lattice) with mounting details and dimensions, i.e. switch mounting height above grade, phase spacing, etc.
- For pole mounted switches, type of pole (wood, concrete, steel, laminated wood) with mounting details and dimensions, i.e. switch mounting height above grade, phase spacing, cross-arm or truss details, etc.
- Type of operating mechanism: manual, motor operator, or worm gear
- Optional equipment

An Order Specification checklist is available to assist you in organizing and completing the information required. You may obtain a copy of the checklist by contacting SEECO, your local sales representative, or on-line at www.seecoswitch.com

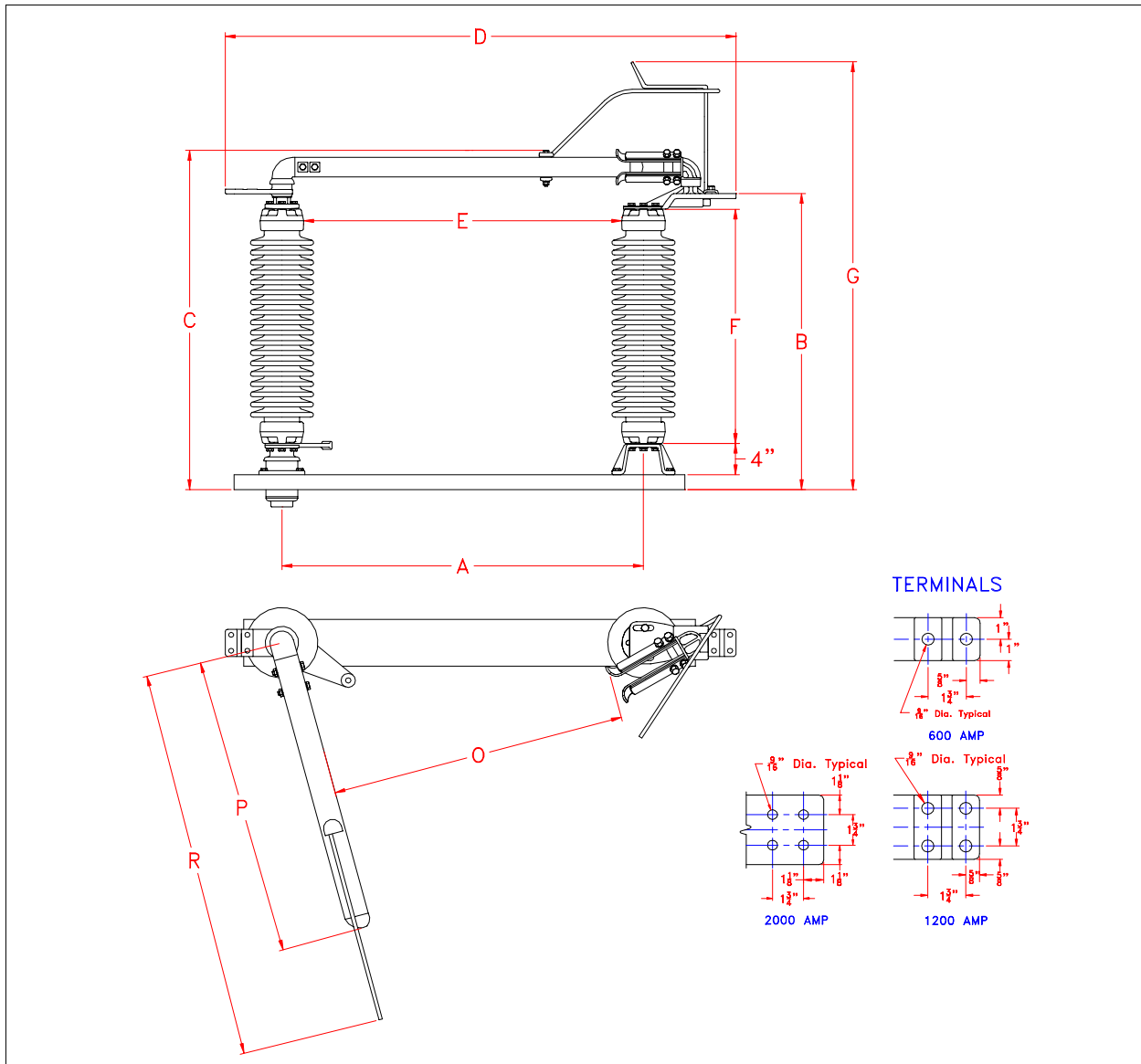


Catalog Numbers and Ratings

Voltage Rating			Current Rating		Insul TR Nbr	Type "S" Side-Break Switch				
Nom	Max	BIL	Cont	Mom		Horizontal	Vertical	Under-Hung	Weight, Lbs	
									Install	Ship
15	15.5	110	600	40	205	SH01506S	SV01506S	SU01506S	406	540
			1200	61		SH01512S	SV01512S	SU01512S	436	580
			2000	100		SH01520S	SV01520S	SU01516S	441	585
23	25.8	150	600	40	208	SH02306S	SV02306S	SU02306S	484	644
			1200	61		SH02312S	SV02312S	SU02312S	514	684
			2000	100		SH02320S	SV02320S	SU02316S	519	689
34.5	38	200	600	40	210	SH03406S	SV03406S	SU03406S	607	807
			1200	61		SH03412S	SV03412S	SU03412S	640	851
			2000	100		SH03420S	SV03420S	SU03420S	645	856
46	48.3	250	600	40	214	SH04606S	SV04606S	SU04606S	751	999
			1200	61		SH04612S	SV04612S	SU04612S	781	1039
			2000	100		SH04620S	SV04620S	SU04620S	786	1044
69	72.5	350	600	40	216	SH06906S	SV06906S	SU06906S	969	1289
			1200	61		SH06912S	SV06912S	SU06912S	1002	1333
			2000	100		SH06920S	SV06920S	SU06920S	1175	1563
115	121	550	600	40	286	SH11506S	SV11506S	SU11506S	1878	2515
			1200	61		SH11512S	SV11512S	SU11512S	1905	2542
			2000	100		SH11520S	SV11520S	SU11520S	2235	2973
138	145	650	600	40	288	SH13806S	SV13806S	SU13806S	2148	2715
			1200	61		SH13812S	SV13812S	SU13812S	2184	2739
			2000	100		SH13820S	SV13820S	SU13820S	2562	3407
161	169	750 (1)	600	40	291	SH16106S	SV16106S	SU16106S	2397	2970
			1200	61		SH16112S	SV16112S	SU16112S	2451	3030
			2000	100		SH16120S	SV16120S	SU16120S	2875	3824

NEMA Recommended Phase Spacing (inches)				
kV	Buses	Without Horns	Horn Gap	Min. Metal to Metal
15	24	30	36	10
23	30	36	48	12
34.5	36	48	60	18
46	48	60	72	22
69	60	72	84	32
115	84	108	120	53
138	96	132	144	63
161	108	156	168	72

(1) To specify a 161 kV switch with a 900 BIL, add
"-0900" to the catalog number, ex. SH16112S-0900



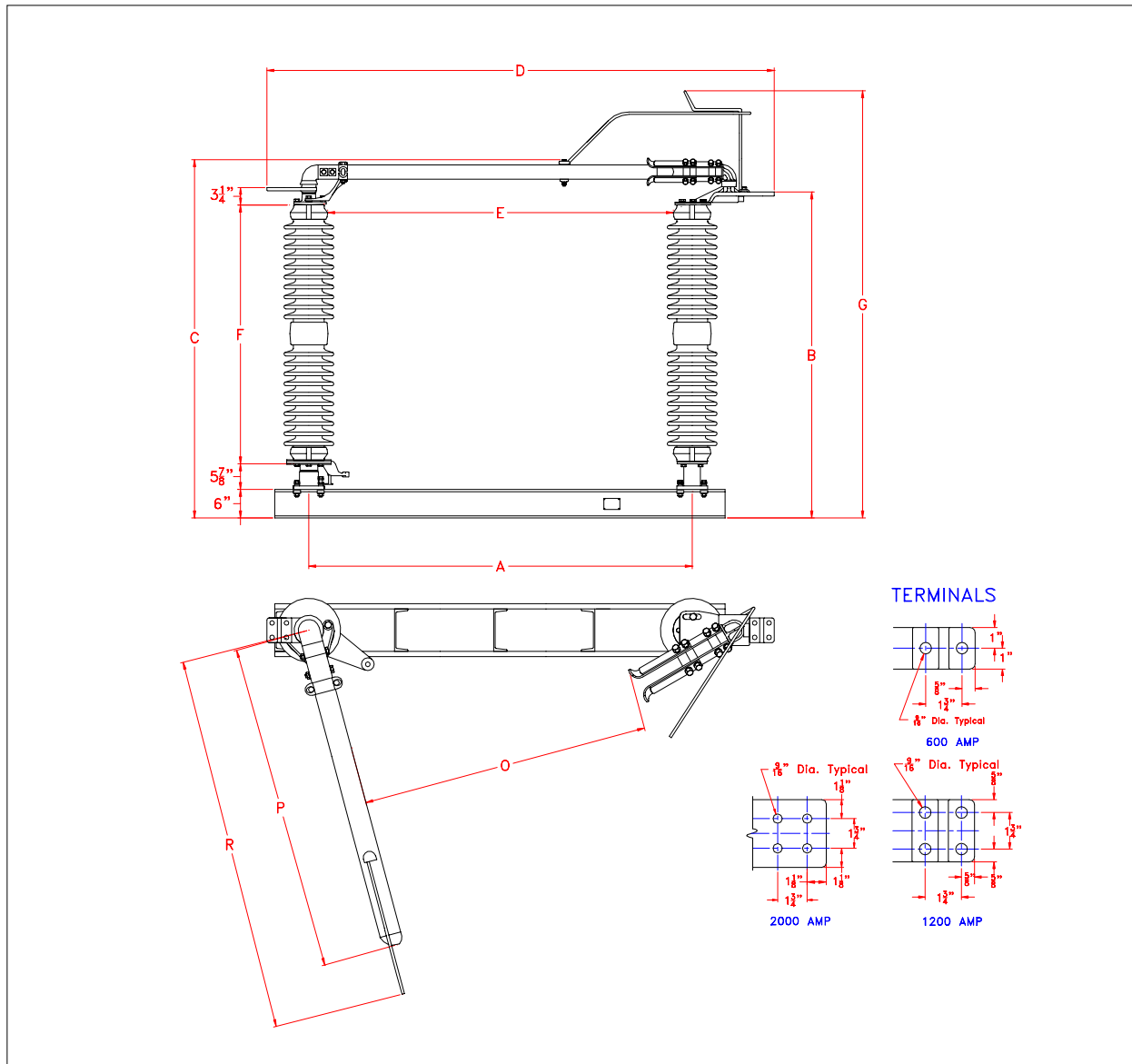
Dimensions in Inches (Unless Otherwise Specified)

kV	A	B	C	D	E	F	G	O	P	R
15	18	18-1/2	23	34-1/8	13-1/4	10	29-1/2	10-3/4	14-15/16	27-3/16
23	20	22-1/2	27	36-1/8	15-1/4	14	33-1/2	12-3/4	16-7/8	27-3/4
34.5	26	26-1/2	31	42-1/8	20-3/8	18	37-1/2	18-1/2	22-5/8	33-1/2
46	30	30-1/2	35	46-1/8	23	22	41-1/2	23-1/4	26-1/2	37-3/8
69	42	38-1/2	43	58-1/8	34-1/2	30	49-1/2	34-1/4	38-1/4	49



**Serving the Electrical Utility
Industry Since 1920**

Document PC-004-1
March 25, 2002



Dimensions in Inches (Unless Otherwise Specified)

kV	A	B	C	D	E	F	G	O	P	R
115	60	60-1/8	64-13/16	77-7/8	51-1/2	45	71-1/4	54-1/8	56-1/8	67-1/8
138	72	69-1/8	73-13/16	89-7/8	63-1/2	54	80-1/4	64-1/8	68-1/8	79-1/8
161	84	77-1/8	81-13/16	101-7/8	75-1/2	62	88-1/4	75-1/8	80-1/8	91-1/8