



Side-Break Switch



**SEECO 115 kV, 1200 amp side-break switch with
full loadbreak interrupter, catalog SL115124S**

Ordering Information

Standard Equipment

Type "SMH" and "SL" side-break switches come complete with copper and copper alloy live parts, galvanized steel channel bases, and a manual control mechanism consisting of vertical control rods, horizontal control rods, outboard bearings, intermediate control rod guides, operating handle, lockplate, and ground strap.

Switches up through 69kV are shipped complete with standard strength station post insulators; individual switch pole units are pre-assembled and factory adjusted. Switches rated 115 kV and above are shipped pre-assembled (live parts on switch bases), but with insulators crated separately.

Type "SMH" switches are supplied with wipe-type arcing horns of hard drawn copper. Wipe-type horns protect the main switch contacts in opening and closing but are not rated for interruption of line charging or transformer magnetizing currents. For more demanding interrupting requirements, high speed, snap-out arcing horns can be provided, at additional cost.

Type "SL" switches are furnished with MONORUPTR(R) vacuum interrupters for arcless switching of load, loop, line charging, and transformer magnetizing currents. Please refer to the catalog section for MONORUPTR(R) vacuum interrupters to view interrupter ratings, applications, and features and benefits.

Optional Equipment

Accessories, such as motor operators, worm gear mechanisms, mounting trusses, operator platforms, terminal connectors, and auxiliary switches are also available.

Type: SMH (airbreak) and SL (loadbreak)

Insulator Profile: Parallel

Orientation: Horizontal Upright only

Voltage: 15 - 161 KV

Current: 600, 1200, and 2000 Ampere

Description

A two insulator, group operated, side-opening, air-break, disconnect switch, with one rotating insulator per phase for operation.

Application

Frequently used for line disconnecting, isolating and bypassing breakers and transformers, bus sectionalizing, and isolating arrestors, metering equipment, and other apparatus. Can be either pole or substation structure mounted. Available in both airbreak and loadbreak configurations.

Features & Benefits

- Simple and mechanically reliable
- No overhead clearance problems
- Minimal operating effort, especially at higher voltages
- Lowest cost vs. other types of group operated switches
- Readily adaptable to quick break arcing horns and vacuum interrupters
- Excellent ice breaking characteristics

To Be Specified on Order

To obtain pricing information or to place an order, the following minimum information must be specified:

- Catalog Number
- Voltage Rating (kV) and BIL Rating (kV)
- Continuous Current Rating (amps)
- Momentary Current Rating (RMS amps)
- If insulators are required, specify TR number; if insulators are non-standard, specify required parameters, i.e. polymer, extra leakage distance, high strength, resistive glazing, etc.
- For structure mounted switches, type of mounting structure (beam, tube, lattice) with mounting details and dimensions, i.e. switch mounting height above grade, phase spacing, etc.
- For pole mounted switches, type of pole (wood, concrete, steel, laminated wood) with mounting details and dimensions, i.e. switch mounting height above grade, phase spacing, cross-arm or truss details, etc.
- Type of operating mechanism: manual or motor operator or worm gear
- Optional equipment

An Order Specification checklist is available to assist you in organizing and completing the information required. You may obtain a copy of the checklist by contacting SEECO, your local sales representative, or on-line at www.seecoswitch.com

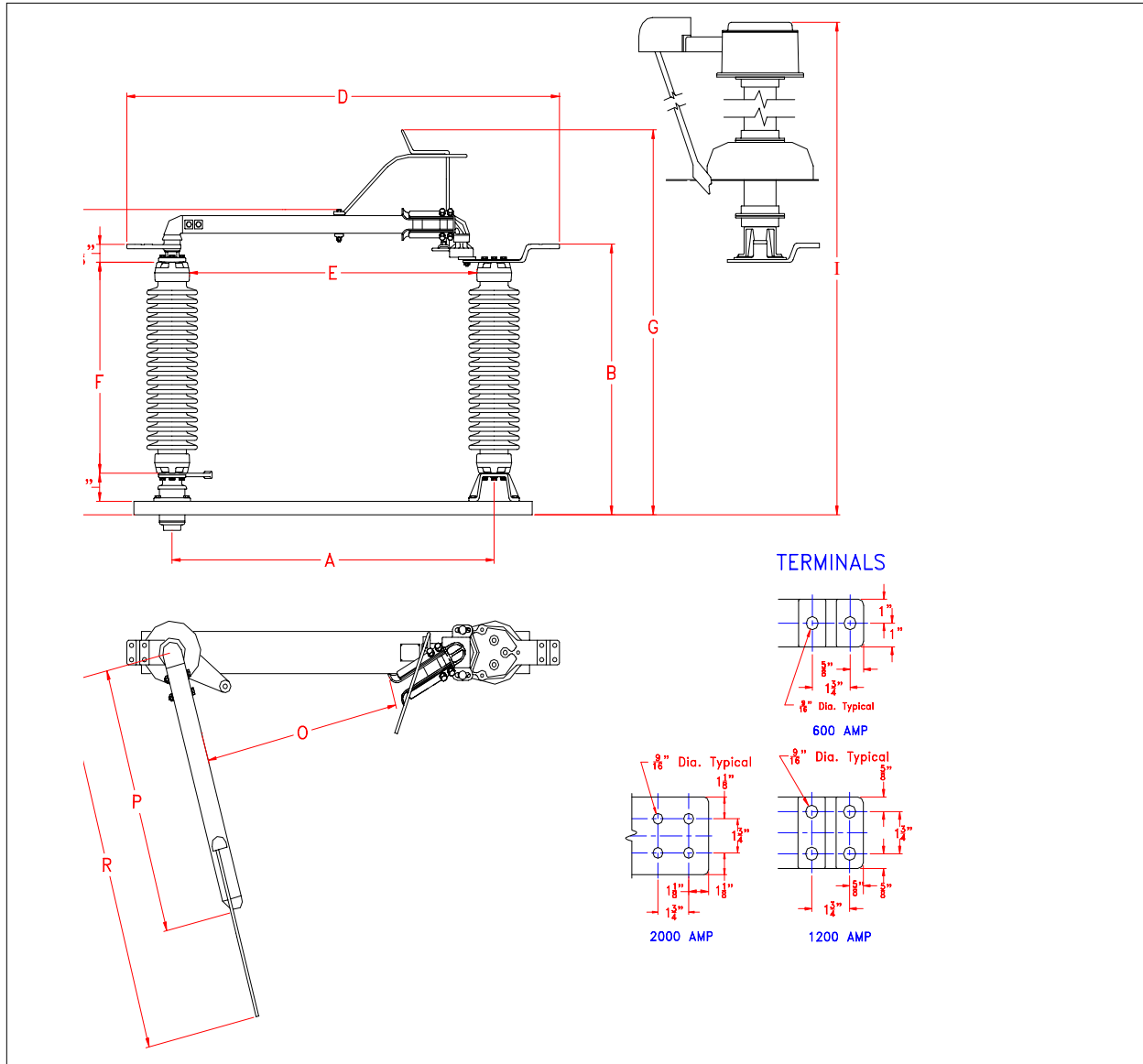


Catalog Numbers and Ratings

Voltage Rating			Current Rating		Insul TR Nbr	Type SMH			Type SL		
Nom	Max	BIL	Cont	Mom		Catalog No	Weight, Lbs		Catalog No	Weight, Lbs	
							Install	Ship		Install	Ship
15	15.5	110	600	40	205	SMH01506S	324	421	SL015061S	459	597
			1200	61		SMH01512S	356	463	SL015121S	491	638
			2000	100		SMH01520S	361	468	SL015201S	496	643
23	25.8	150	600	40	208	SMH02306S	407	529	SL023061S	542	705
			1200	61		SMH02312S	439	571	SL023121S	574	746
			2000	100		SMH02320S	444	576	SL023201S	579	751
34.5	38	200	600	40	210	SMH03406S	540	702	SL034061S	675	878
			1200	61		SMH03412S	570	741	SL034121S	705	917
			2000	100		SMH03420S	575	746	SL034201S	710	922
46	48.3	250	600	40	214	SMH04606S	675	878	SL046062S	900	1170
			1200	61		SMH04612S	705	917	SL046122S	930	1209
			2000	100		SMH04620S	715	927	SL046202S	940	1219
69	72.5	350	600	40	216	SMH06906S	1020	1326	SL069063S	1260	1638
			1200	61		SMH06912S	1065	1385	SL069123S	1305	1697
			2000	100		SMH06920S	1075	1395	SL069203S	1315	1707
115	121	550	600	40	286	SMH11506S	1950	2535	SL115064S	2250	2925
			1200	61		SMH11512S	2010	2613	SL115124S	2310	3003
			2000	100		SMH11520S	2030	2633	SL115204S	2330	3023
138	145	650	600	40	288	SMH13806S	2220	2886	SL138065S	2565	3335
			1200	61		SMH13812S	2280	2964	SL138125S	2625	3413
			2000	100		SMH13820S	2310	2994	SL138205S	2655	3443
161	169	750 (1)	600	40	291	SMH16106S	2475	3218	SL161066S	2850	3705
			1200	61		SMH16112S	2550	3315	SL161126S	2925	3803
			2000	100		SMH16120S	2590	3345	SL161206S	2965	3843

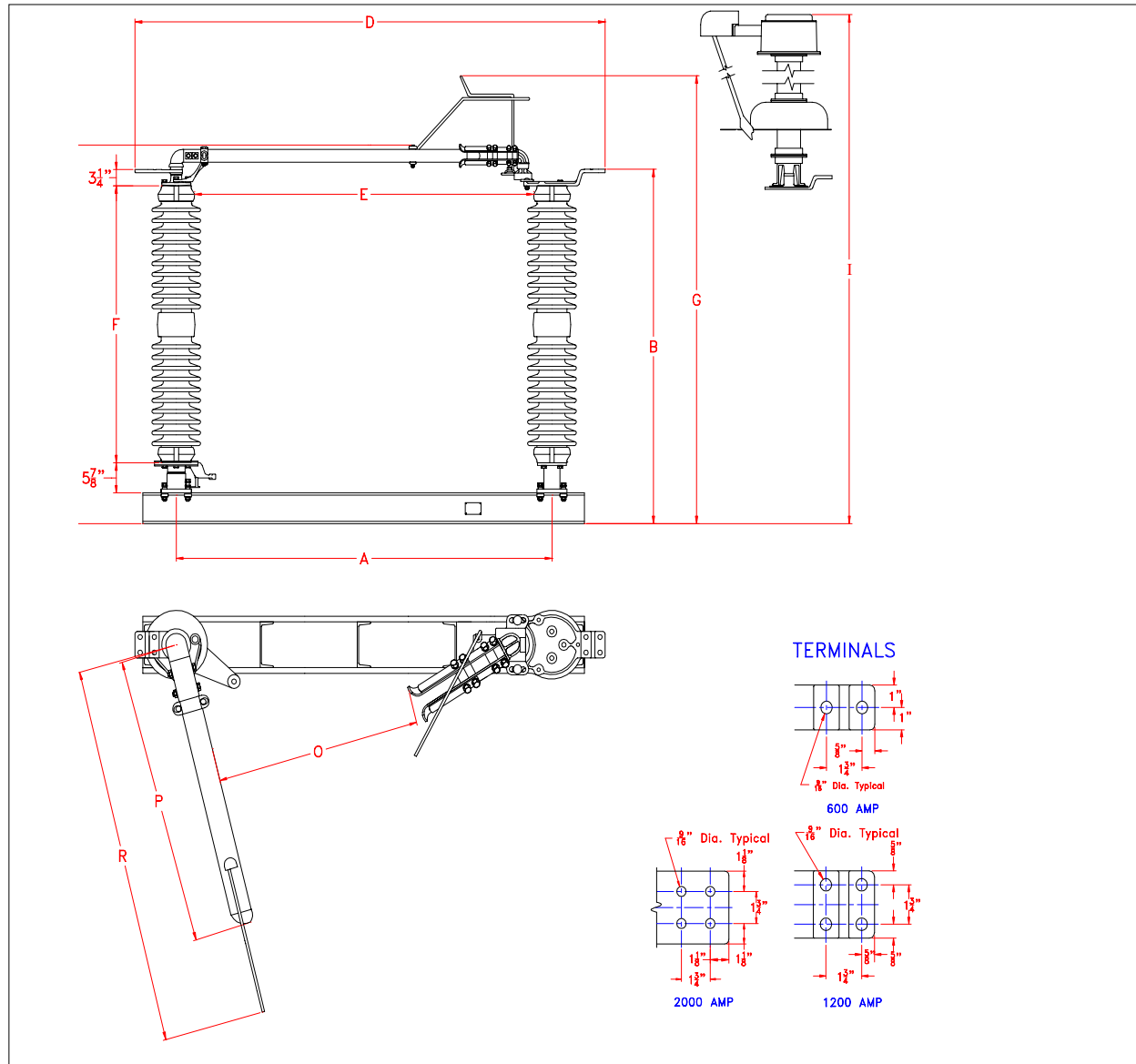
NEMA Recommended Phase Spacing (inches)				
kV	Buses	Without Horns	Horn Gap	Min. Metal to Metal
15	24	30	36	10
23	30	36	48	12
34.5	36	48	60	18
46	48	60	72	22
69	60	72	84	32
115	84	108	120	53
138	96	132	144	63
161	108	156	168	72

(1) To specify a 161 kV switch with a 900 BIL, add
“-0900” to the catalog number, ex. SMH16112S-0900



Dimensions in Inches (Unless Otherwise Specified)

kV	A	B	C	D	E	F	G	I	O	P	R
15	28-1/2	18-1/2	23-5/16	43-7/16	23-1/2	10	29-1/2	38-13/16	14	19-3/8	24-3/8
23	34-1/2	22-1/2	27-5/16	49-7/16	29-1/2	14	33-1/2	42-13/16	20	23-3/8	28-3/8
34.5	42-1/2	26-1/2	31-5/16	57-7/16	37-1/2	18	37-1/2	46-13/16	29	31-3/8	36-3/8
46	42-1/2	30-1/2	35-5/16	57-7/16	36-1/2	22	41-1/2	66-1/4	29	31-3/8	36-3/8
69	50-1/2	38-1/2	43-13/16	65-7/16	44-1/2	30	49-1/2	86-1/8	37	39-3/8	46-3/8



Dimensions in Inches (Unless Otherwise Specified)

kV	A	B	C	D	E	F	G	I	O	P	R
115	73	60-1/8	64-13/16	89-1/8	64-1/2	45	71-1/4	119-3/8	49-5/16	57-1/2	66-7/8
138	80-3/4	69-1/8	73-13/16	96-7/8	72-1/4	54	80-1/4	140-1/4	57-1/16	65-1/4	74-5/8
161	88-1/2	77-1/8	81-13/16	104-5/8	80	62	88-1/4	160-1/8	64-13/16	73	82-3/8